



WALRUS®

TQ Series Electronic Control Pump

ISO 9001



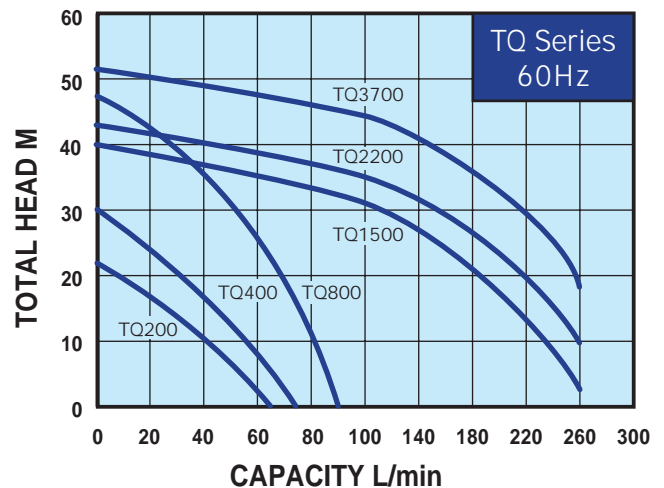
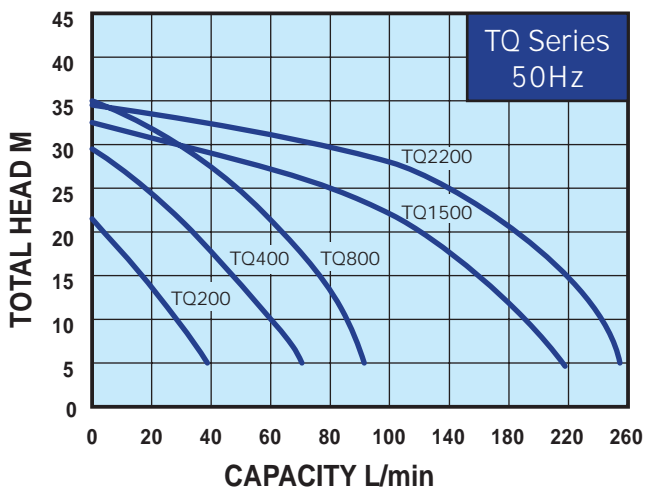
Applications:

The TQ series pumps are designed for water supply and pressure boosting in residential, commercial and light industrial applications where low or inadequate water pressure exists. It is suitable for boosting pressure from underground or surface water supplies.

Product Features:

1. The TQ is a complete, all-in-one unit, consisting of pump, motor, pressure tank, and electronic controller. The built-in electronic controller provides constant pressure which ensures that the pump starts automatically when water is consumed and operates continuously until water is not required.
2. Compact design and quiet operation make the TQ series suitable for many applications.
3. The TQ is constructed from the top quality corrosion resistant materials.
4. Pump has built in dry-run shut off with automatic reset function.
5. The motor has built-in thermal overload to protect against high operating temperatures and over current. (Single phase motor only)
6. The TQ has an anti-cycling feature which prevents the pump from continuous starting and stopping when you have a dripping tap or minor leak in the system.
7. The pumps will lift water up to 7.6m. with foot valve and pump suction piping filled with water.

Performance curve:



WALRUS PUMP



Suitable liquids:
Potable water or other clean or non-corrosive liquids.

Operation Conditions:

1. Ambient temperature: Max. +40°C
2. Liquid temperature: +4°C ~ +40°C
3. System Pressure : Max. 8.5 kg/cm²
4. Relative humidity: Max. 85% (RH)
5. Under normal operation, it is not necessary to adjust the pressure unless the cut in pressure is higher than preset activation point (refer to specification).

Model code

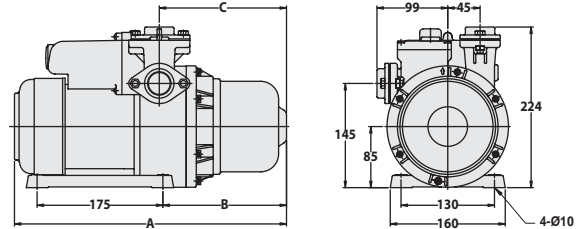


Materials

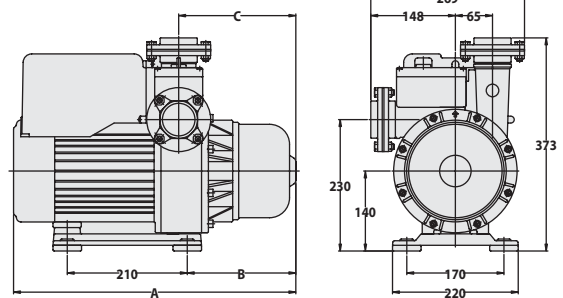
Part name	TQ200/400	TQ800	TQ1500/2200/3700
Pump casing	glass filled noryl		
Filling plug	NyLon		
Outlet & Inlet	SUS 304		
Intermediate Chamber	glass filled polycarbonate	SUS 304	
Impeller	glass filled noryl	SUS 304	
Mechanical Seal	Ceramic+Carbon+NBR	SiC+Carbon+Viton	
Shaft	SUS 410	SUS 304	
Motor Shell	Coating Steel	Aluminum alloy	

Dimensions:

TQ200/400/800



TQ1500/2200/3700



Model	Cycle (Hz)	Dimensions (mm)		
		A	B	C
TQ200	50	389	183	188
	60	365	159	164
TQ400	50	405	198	203
	60	379	172	177
TQ800	50 / 60	451	198	203
TQ1500 ~ 2200	50 / 60	501	197	212
3700	60	501	197	212

Specification:

Model	Power (W)	Cycle (Hz)	Phase (Ø)	Voltage (V)	Amp's (A)	Inlet (in.)	Outlet (in.)	Preset activation point (kg/cm ²)	H max. (m)	Q max. (L/min)
TQ200	180	50	1	200~240	1.5	1"	1"	1.2	22	45
		60	1	110/220	4.0/2.0	1"	1"	1.4	22	64
TQ400	370	50	1	200~240	3	1"	1"	1.8	30	75
		60	1	110/220	6.0/3.0	1"	1"	2.0	28	70
TQ800	750	50	1	200~240	4.4	1"	1"	2.0	35	95
		60	1	110/220	11/5.5	1"	1"	2.5	47	90
TQ1500	1500	50	1	200~240	7.2	2"	2"	2.5	32	230
			3	200-240 or 380-440	5.8 or 3.3					
		60	1	220	9.5	2"	2"	3.0	37	270
			3	220 or 380	6.5 or 4.2					
TQ2200	2250	50	1	200~240	11.1	2"	2"	2.5	34	250
			3	200-240 or 380-440	7.2 or 4.1					
		60	3	220 or 380	9.5 or 5.2	2"	2"	3.0	42	270
TQ3700	3750	60	3	220 or 380	13.8 or 6.8	2"	2"	3.0	52	270